

1 PIER FOUNDATION PLAN
SCALE: 1/4" = 1'-0"

TRIPLE ZINC G-185 CONTAINS ROUGHLY THREE TIMES THE AMOUNT OF ZINC AS THE STANDARD G60 GALVANIZING. THIS PROVIDES ADDITIONAL PROTECTION AGAINST CORROSION ATTRIBUTED TO THE NEW WOOD PRESERVATIVES. UNFORTUNATELY, WE ARE UNABLE TO PREDICT THE SERVICE LIFE OF PARTICULAR CONNECTORS IN SELECTED ENVIRONMENTS. WE CAN, HOWEVER, PROVIDE A RELATIVE LEVEL OF PROTECTION INFORMATION REGARDING CORROSION RESISTANCE. FROM THIS WE CAN PROVIDE GUIDANCE FOR THE SELECTION OF CORROSION PROTECTION BASED ON THE ANTICIPATED ENVIRONMENTAL CONDITIONS.

- HERE ARE SOME GUIDELINES TO FOLLOW:
- POTENTIAL FOR CORROSION SHOULD BE A PART OF THE CONNECTOR SELECTION CRITERIA
 - FOR ALL KNOWN CORROSIVE ENVIRONMENTS, THE BEST AVAILABLE CORROSION RESISTANT OPTION IS TO USE STAINLESS
 - STEEL CONNECTORS AND FASTENERS
 - FOR EXTERIOR APPLICATIONS AND WITH TREATED WOOD, THE USE OF HDG OR TRIPLE ZINC CONNECTORS WITH HDG FASTENERS IS RECOMMENDED AS A MINIMUM FOR CORROSION PROTECTION
 - ASK FOR AND FOLLOW RECOMMENDATIONS OF THE PRESERVATIVE WOOD TREATER FOR USE OF CONNECTORS AND FASTENERS IN CONTACT WITH THEIR BRAND OF TREATED WOOD PRODUCT
 - CONNECTORS AND THEIR FASTENERS SHOULD ALWAYS BE OF LIKE MATERIALS
 - USP'S WS WOOD SCREWS ARE NOT RECOMMENDED FOR USE WITH PRESERVATIVE OR FIRE-RETARDANT TREATED WOOD
 - FOR ANY QUESTIONS CONTACT USP TECHNICAL ASSISTANCE

CONNECTOR: USE WITH PRESERVATIVE TREATED WOOD

FOR MINIMUM CORROSION PROTECTION, USP STRUCTURAL CONNECTORS RECOMMENDS CONSUMERS USE TRIPLE ZINC G-185 OR HDG CONNECTORS IN ALL OUTDOOR APPLICATIONS AND WITH TREATED LUMBER. IN GENERAL, CONNECTORS, INCLUDING ANCHORS AND FASTENERS, INSTALLED IN CORROSIVE ENVIRONMENTS OR EXPOSED TO CORROSIVE MATERIALS, OR CHEMICALS, CAN BE DAMAGED, POSSIBLY RESULTING IN THE REDUCTION OF LOAD VALUES. STANDARD G60 CONNECTORS SHOULD NOT BE INSTALLED IN POTENTIALLY CORROSIVE ENVIRONMENTS.

CORROSION IS A MULTIFACETED PHENOMENON DEPENDENT ON MANY VARIABLES. MOST OF THESE VARIABLES ARE RELATED TO THE ENVIRONMENT THE STEEL IS PLACED IN. CORROSION CAN OCCUR LEADING TO LOSS OF STRENGTH AND REDUCED CONNECTOR LOAD CARRYING CAPABILITY DUE TO EXPOSURE TO OCEAN AIR OR SALT SPRAY. CHEMICALS USED IN FIRE RETARDANT AND PRESERVATIVE TREATED WOOD, ACID RAIN, AGRICULTURAL CHEMICALS AND FERTILIZERS, ANIMAL WASTES, SWIMMING POOL CHEMICALS, AND EVEN COMMON OUTDOOR EXPOSURE WITH ALTERNATELY WET AND DRY CONDITIONS, OF COURSE, THERE ARE MANY MORE POSSIBLE CORROSIVE ENVIRONMENTS NOT MENTIONED HERE.

GALVANIZING THE STEEL, OR COATING IT WITH A SACRIFICIAL LAYER OF ZINC, IS THE MOST WIDELY USED PROTECTIVE SYSTEM IN OUR LUMBER CONNECTOR INDUSTRY. GALVANIZED COATINGS HAVE A PROVEN COMMERCIAL HISTORY UNDER A WIDE RANGE OF ENVIRONMENTAL CONDITIONS.

PIER & DECK

911 Butter Rd
Bonneau, SC 29431

NO.	DESCRIPTION	DATE

SHEET NAME

PIER FOUNDATION PLAN

PROJECT STATUS

CD'S

PROJECT NUMBER

211076

PROJECT DATE

04/30/2021

DRAWN BY

APD

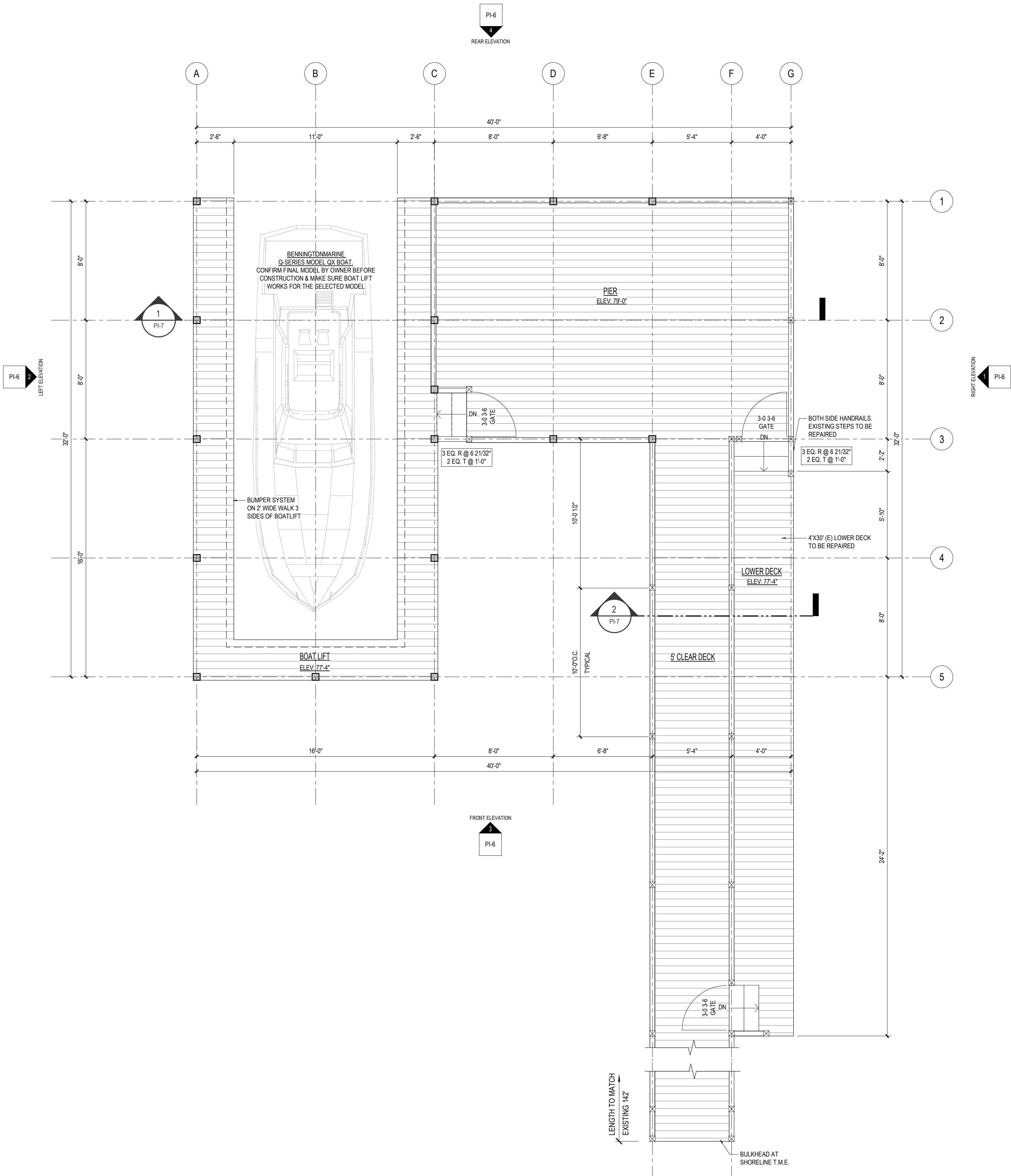
CHECKED BY

RW

SHEET NUMBER

PI-2

PAPER SIZE: 22" X 34" | PRINTED ON: 09/30/2021 8:12:09 PM



1 PIER LEVEL FLOOR PLAN

SCALE: 1/4" = 1'-0"

PIER & DECK

911 Butter Rd
Bonneau, SC 29431

NO.	DESCRIPTION	DATE

SHEET NAME	
PIER LEVEL FLOOR PLAN	
PROJECT STATUS	
CD'S	
PROJECT NUMBER	PROJECT DATE
211076	04/30/2021
DRAWN BY	CHECKED BY
APD	RW
SHEET NUMBER	

PI-3

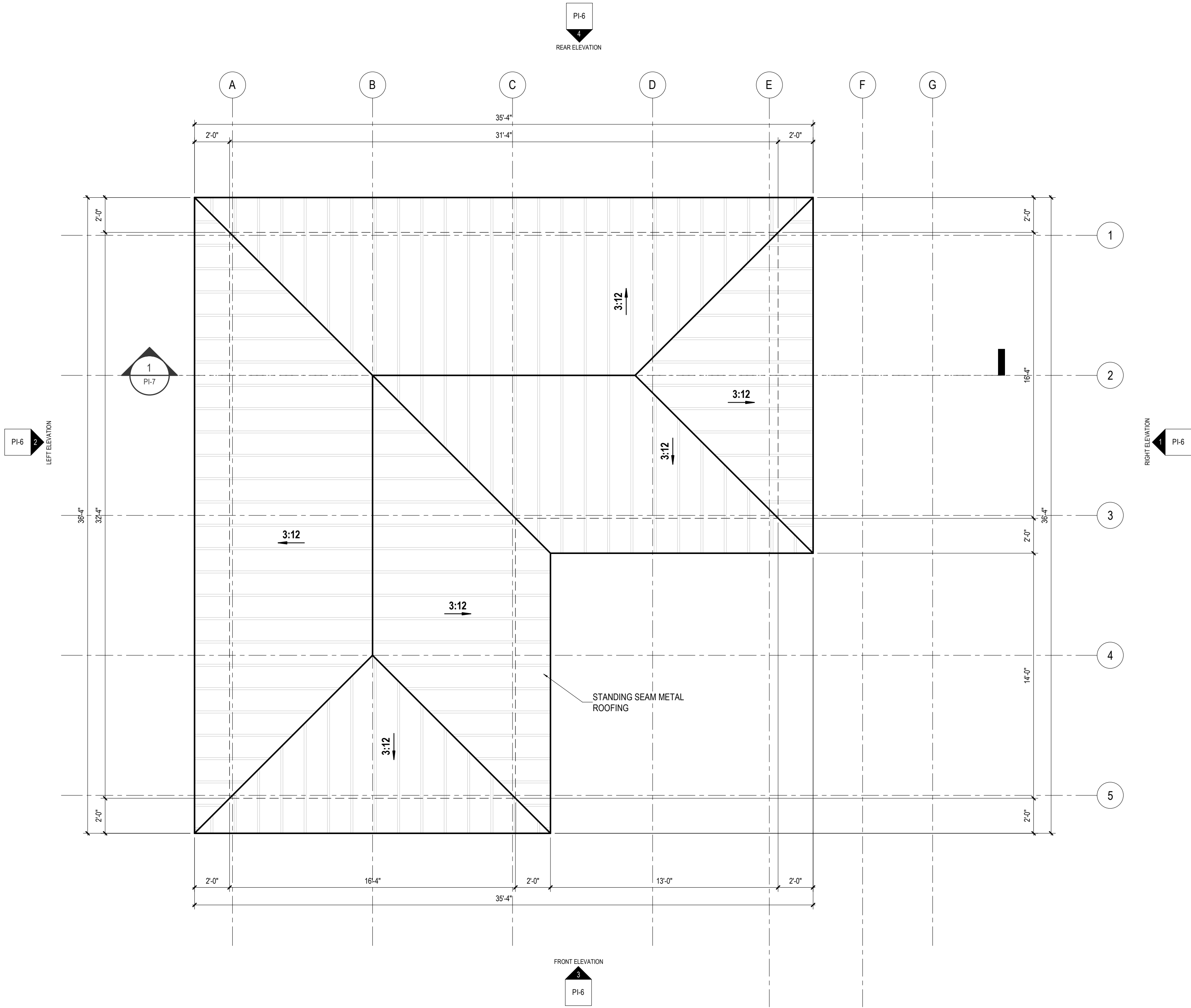
PIER & DECK

911 Butter Rd
Bonneau, SC 29431

NO.	DESCRIPTION	DATE

SHEET NAME	
ROOF PLAN	
PROJECT STATUS	
CD'S	
PROJECT NUMBER	PROJECT DATE
211076	04/30/2021
DRAWN BY	CHECKED BY
APD	RW
SHEET NUMBER	

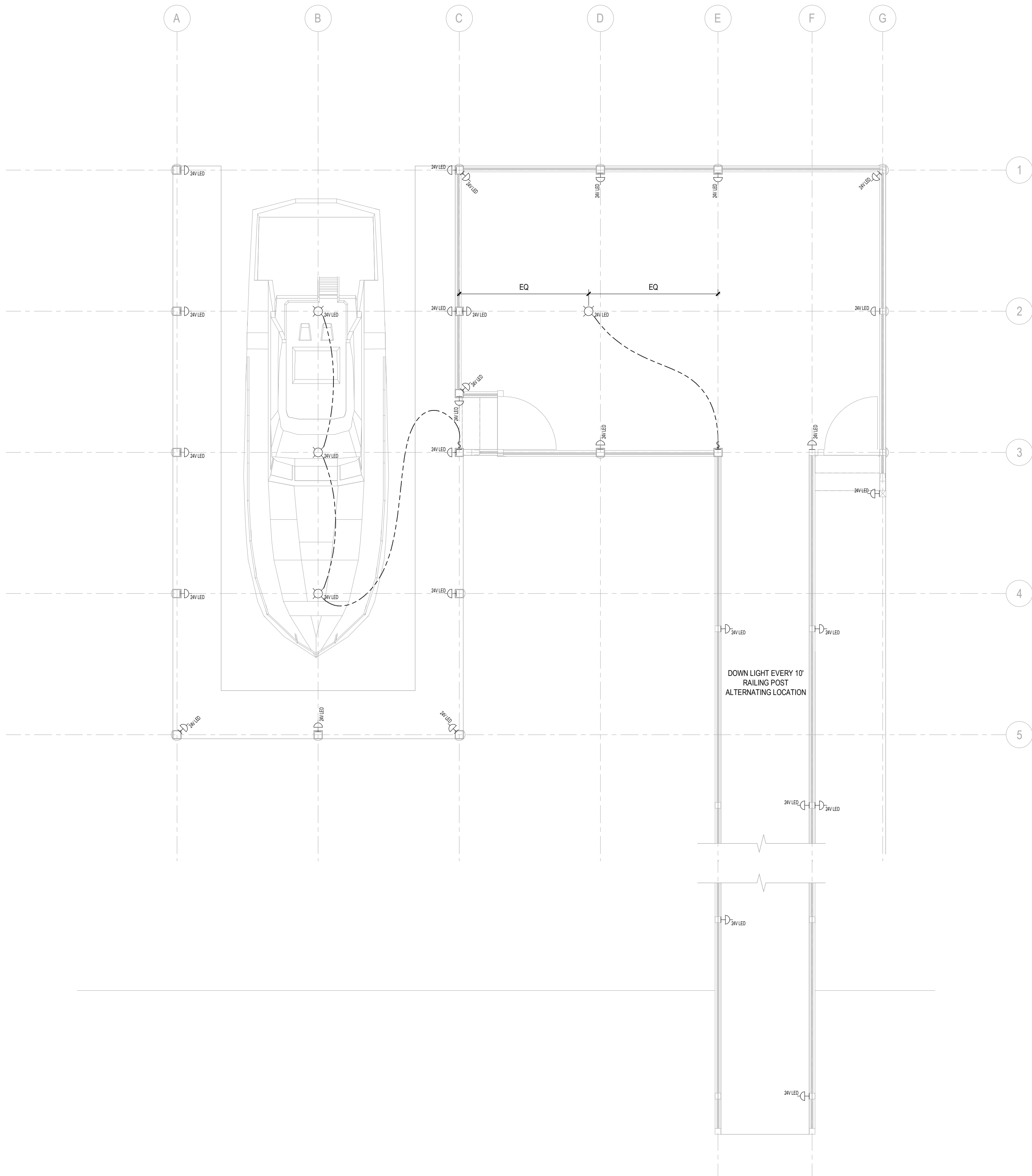
PI-4



1 ROOF PLAN
SCALE: 1/4" = 1'-0"

PIER & DECK

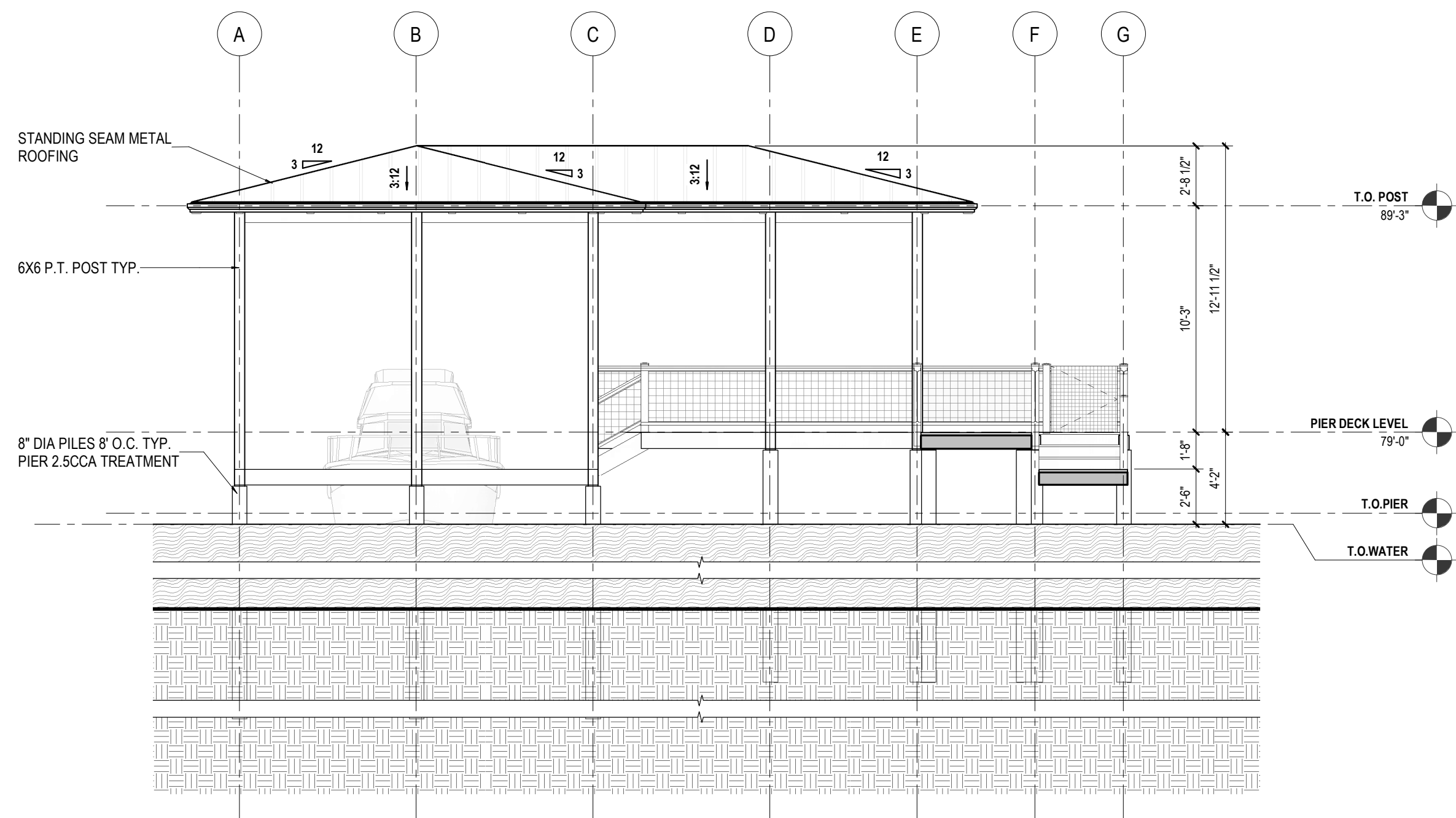
911 Butter Rd
Bonneau, SC 29431



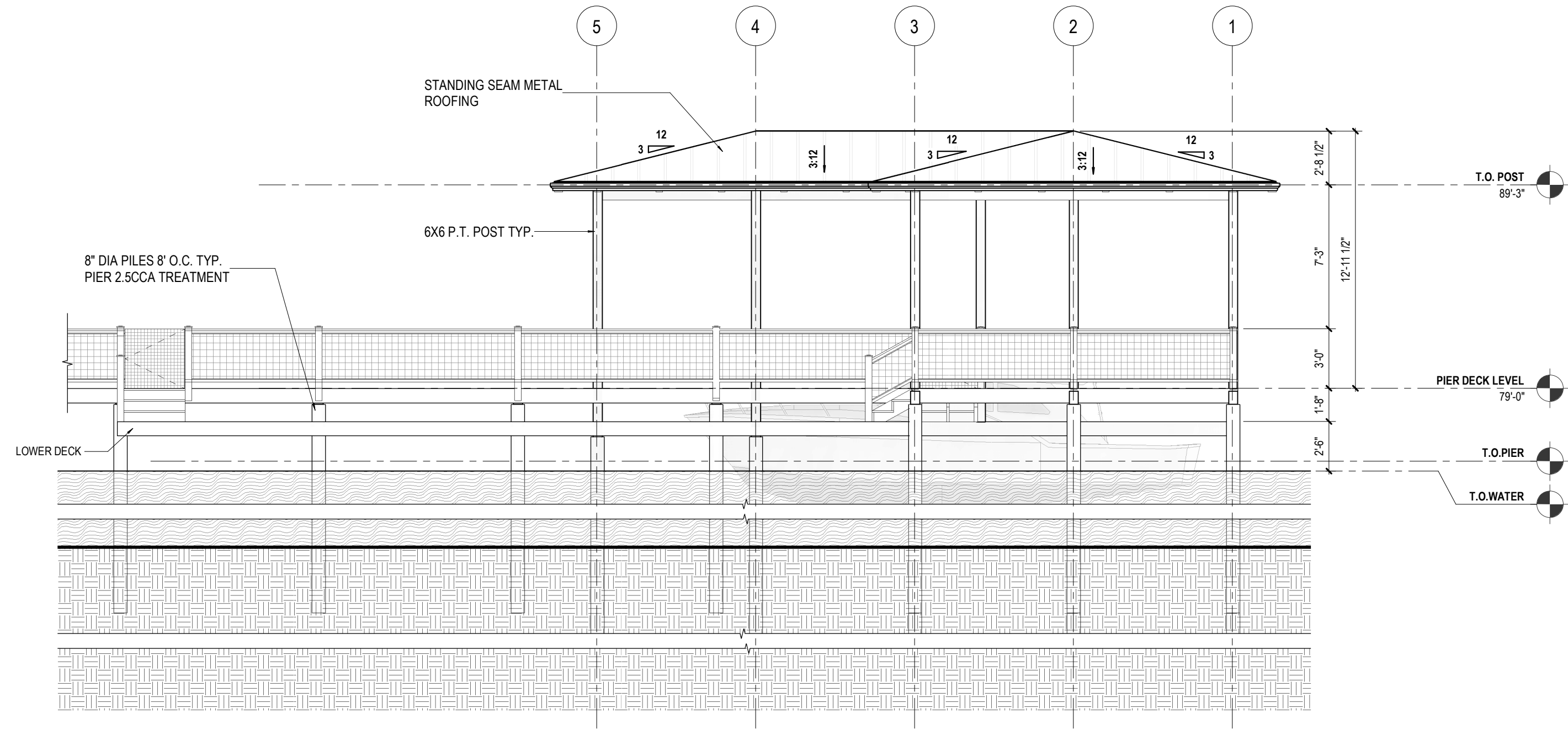
1 PIER LEVEL ELECTRICAL PLAN
SCALE: 1/4" = 1'-0"

ELECTRICAL LEGEND

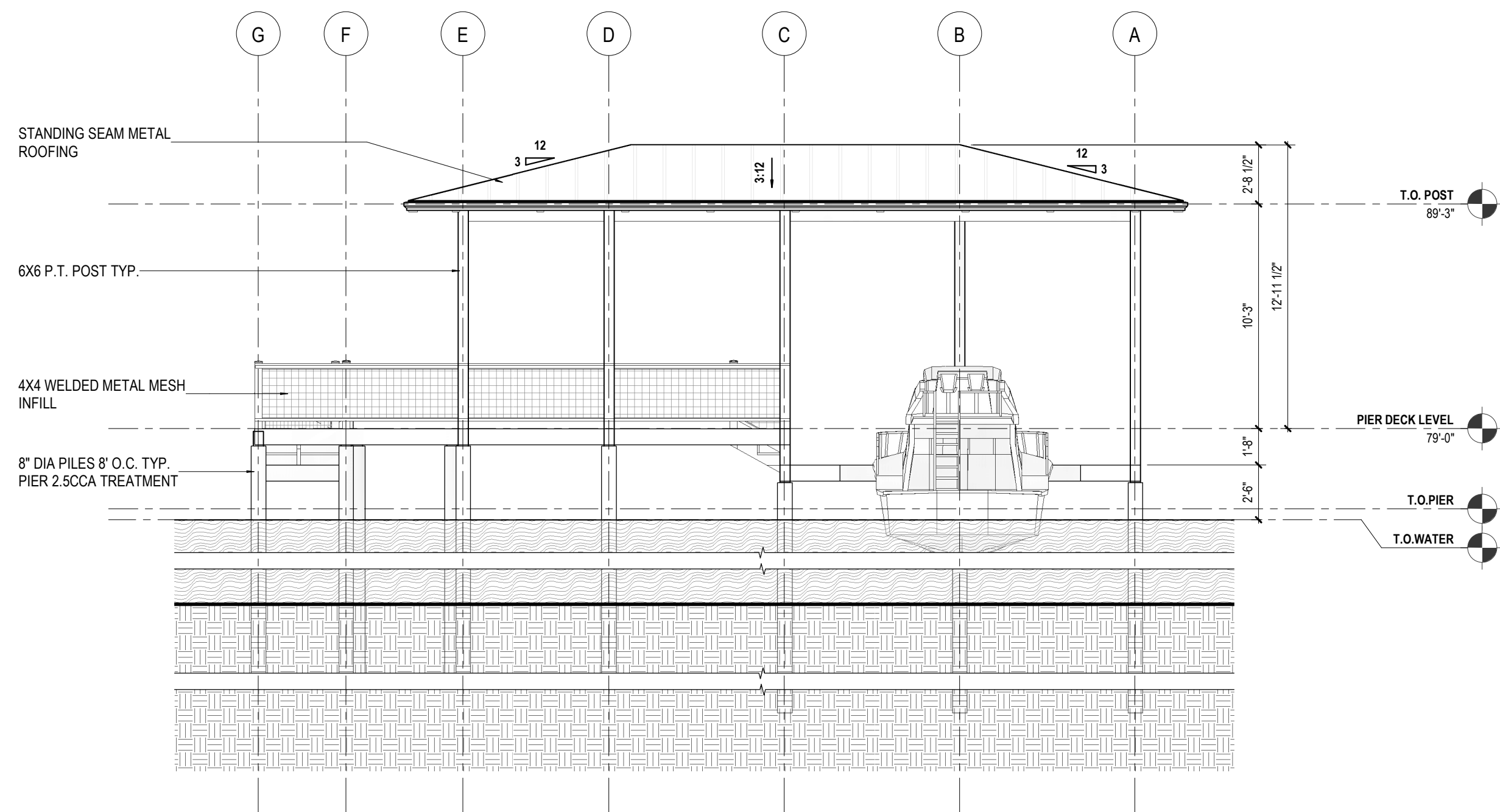
BUZZER	THERMOSTAT
DOOR BELL	JUNCTION BOX
CEILING MOUNT SECURITY CAMERA	ELECTRICAL METER
WALL MOUNT SECURITY CAMERA	ELECTRICAL PANELBOARD
TELEPHONE CABLE	CW: COLD WATER
TV CABLE	HB: HOSE BIB
SINGLE OUTLET	HT: HOT WATER
DUPLEX	GAS
GFI: WP: WATERPROOF S: SWITCHED	FLUORESCENT LINEAR: SURFACE MOUNT OR UNDER CABINET
HALF HOT	FLUORESCENT 2X2
APPLIANCE OUTLET	FLUORESCENT 2X4
QUAD OUTLET	SURFACE MOUNT LIGHT PC: PULL CORD LED: WP: WATER PROOF
FLOOR/CEILING DUPLEX OUTLET OH: OVERHEAD	SURFACE MOUNT PENDANT LIGHT
FLOOR/CEILING QUAD OUTLET OH: OVERHEAD	RECESSED LIGHT
WALL SWITCHES NUMBER 3: 3-WAY, 4: 4 WAYS, ETC. D: DIMMER	RECESSED LIGHT - WALL WASHER
SMOKE DETECTOR	WALL MOUNT LIGHT / WALL WASHER
SMOKE & CARBON MONO-OXIDE COMBO DETECTOR	CEILING FAN
	EXHAUST FAN



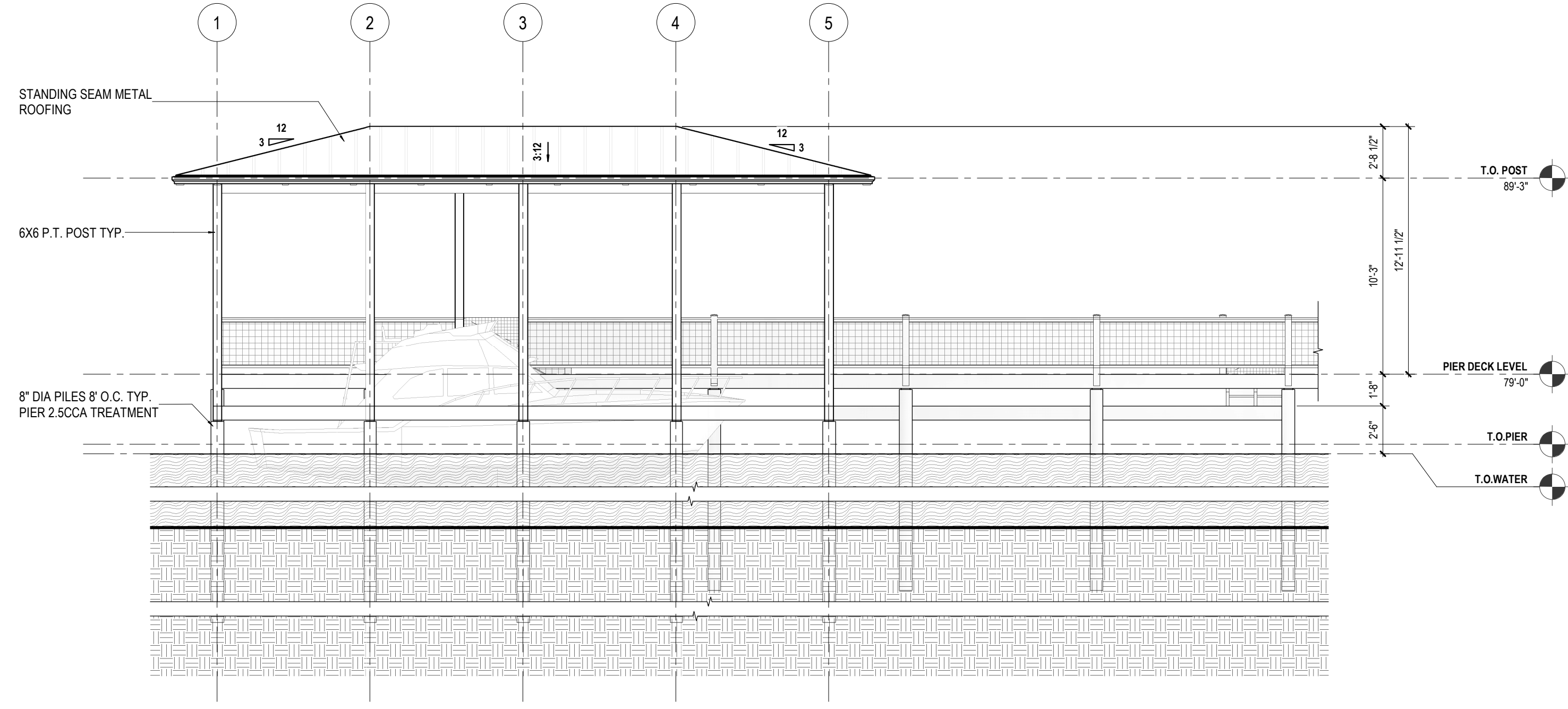
3 FRONT ELEVATION
SCALE: 3/16" = 1'-0"



1 RIGHT ELEVATION
SCALE: 3/16" = 1'-0"



4 REAR ELEVATION
SCALE: 3/16" = 1'-0"



2 LEFT ELEVATION
SCALE: 3/16" = 1'-0"

PIER & DECK

911 Butler Rd
Bonneau, SC 29431

NO.	DESCRIPTION	DATE

SHEET NAME

EXTERIOR ELEVATIONS

PROJECT STATUS

CD'S

PROJECT NUMBER

211076

PROJECT DATE

04/30/2021

DRAWN BY

APD

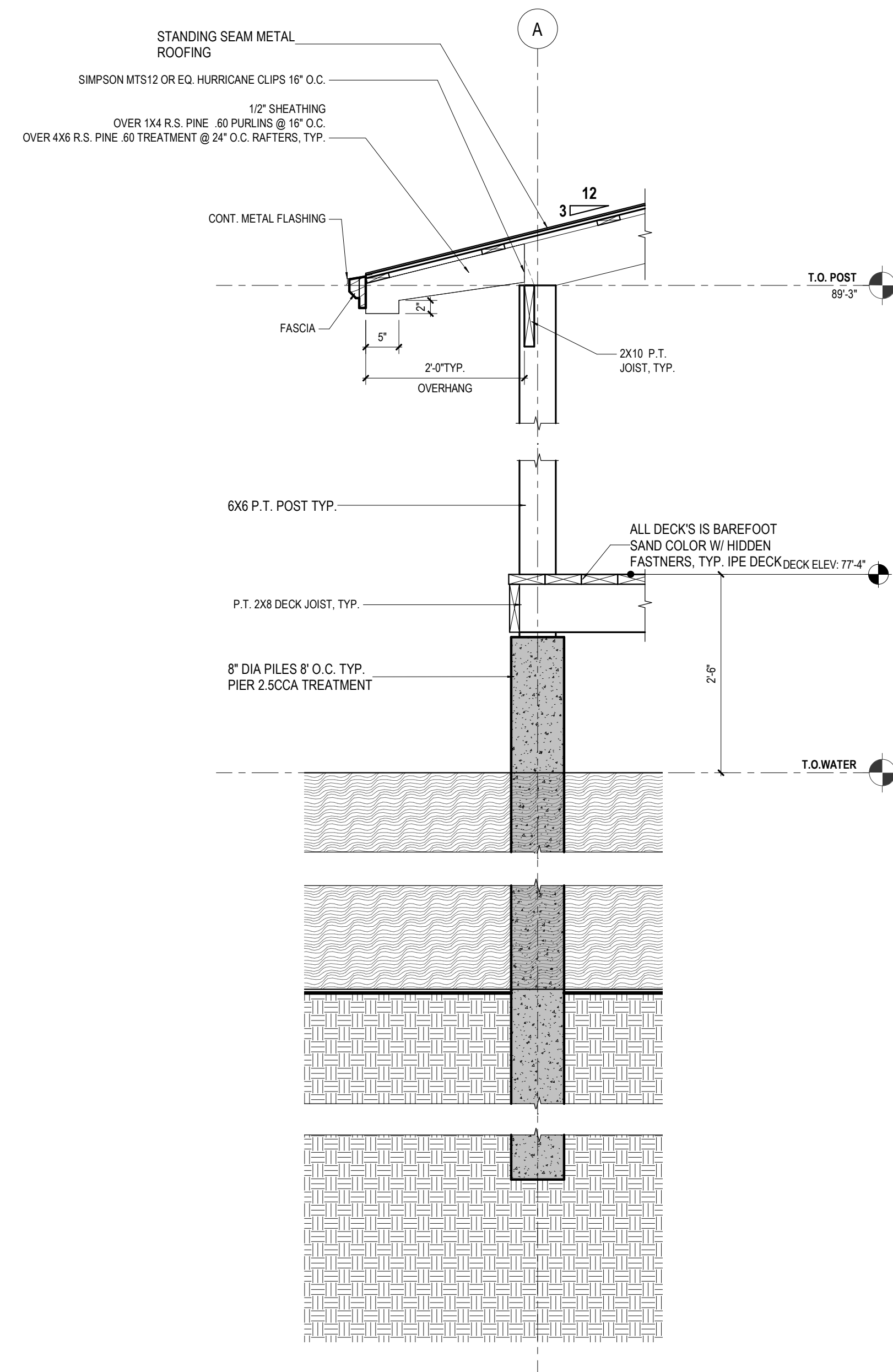
CHECKED BY

RW

SHEET NUMBER

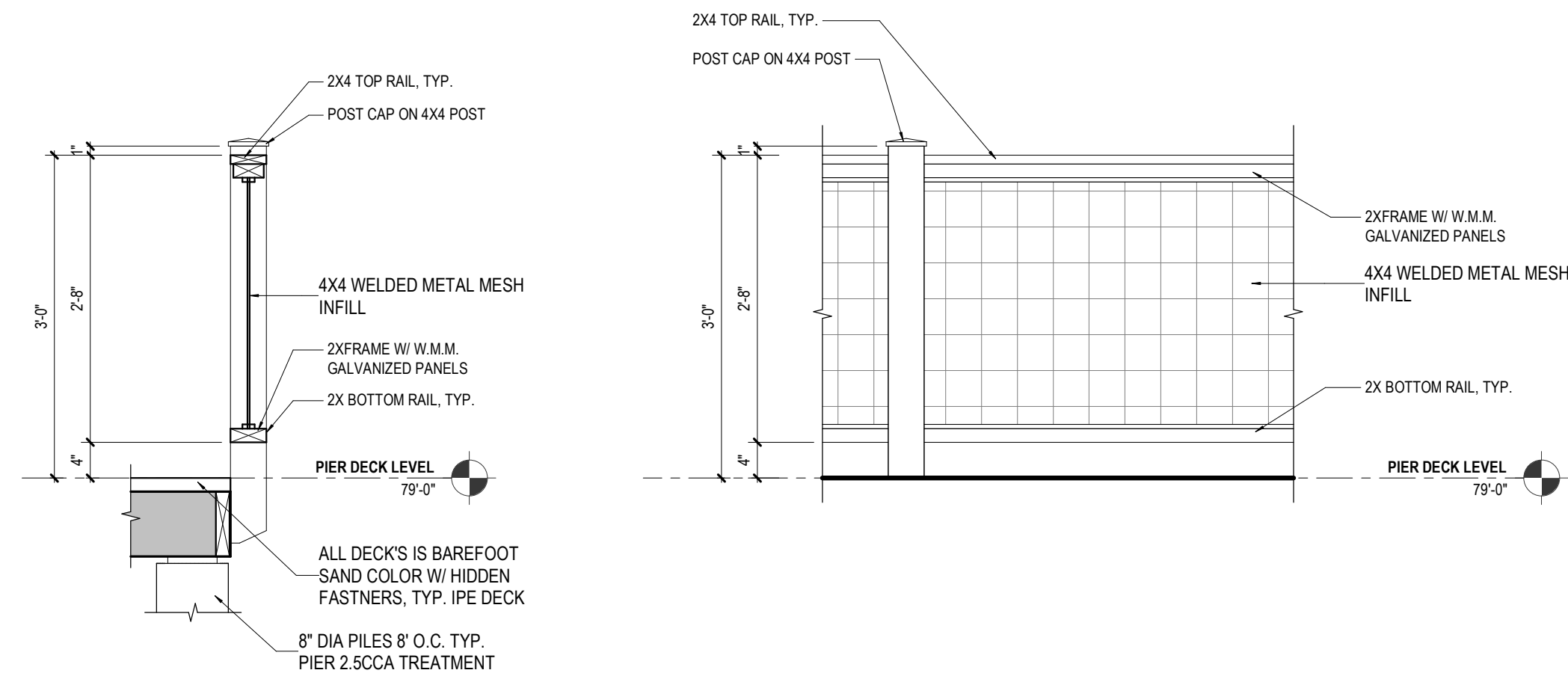
PI-6

DESCRIPTION		DATE
EET NAME		
TYPICAL SECTIONS		
PROJECT STATUS		
CD'S		
PROJECT NUMBER	PROJECT DATE	
211076	04/30/2021	
DRAWN BY	CHECKED BY	
APD	RW	
EET NUMBER		

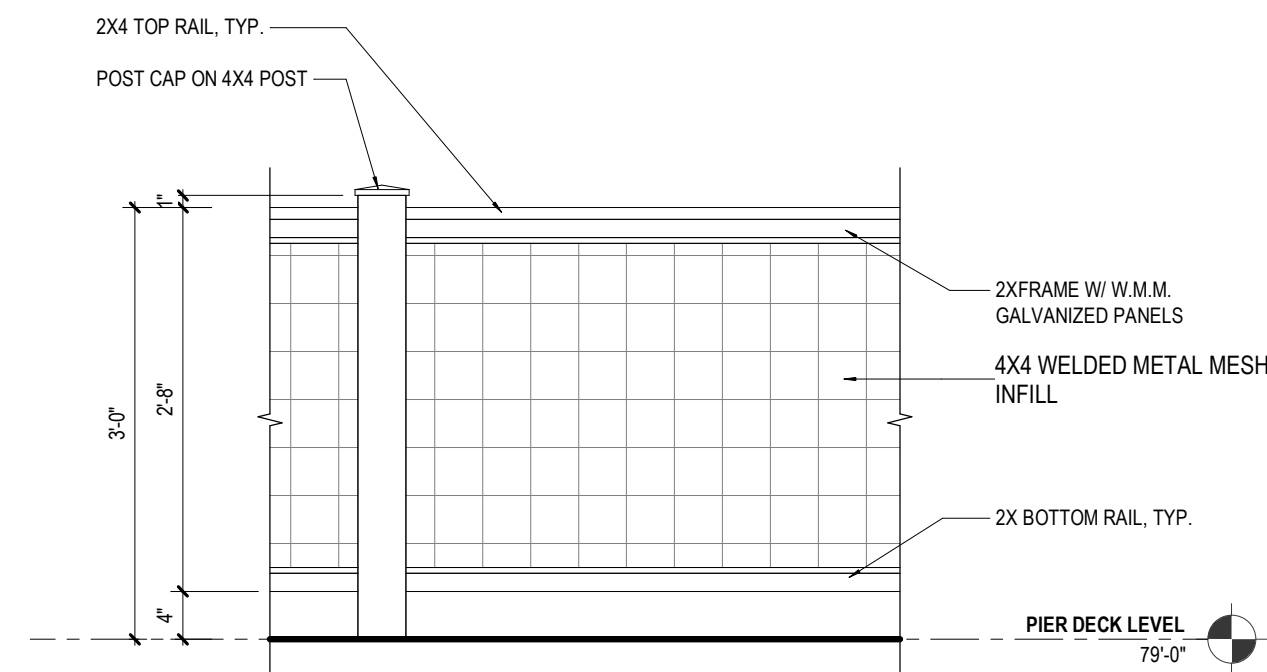


3 TYPICAL SECTION DETAIL

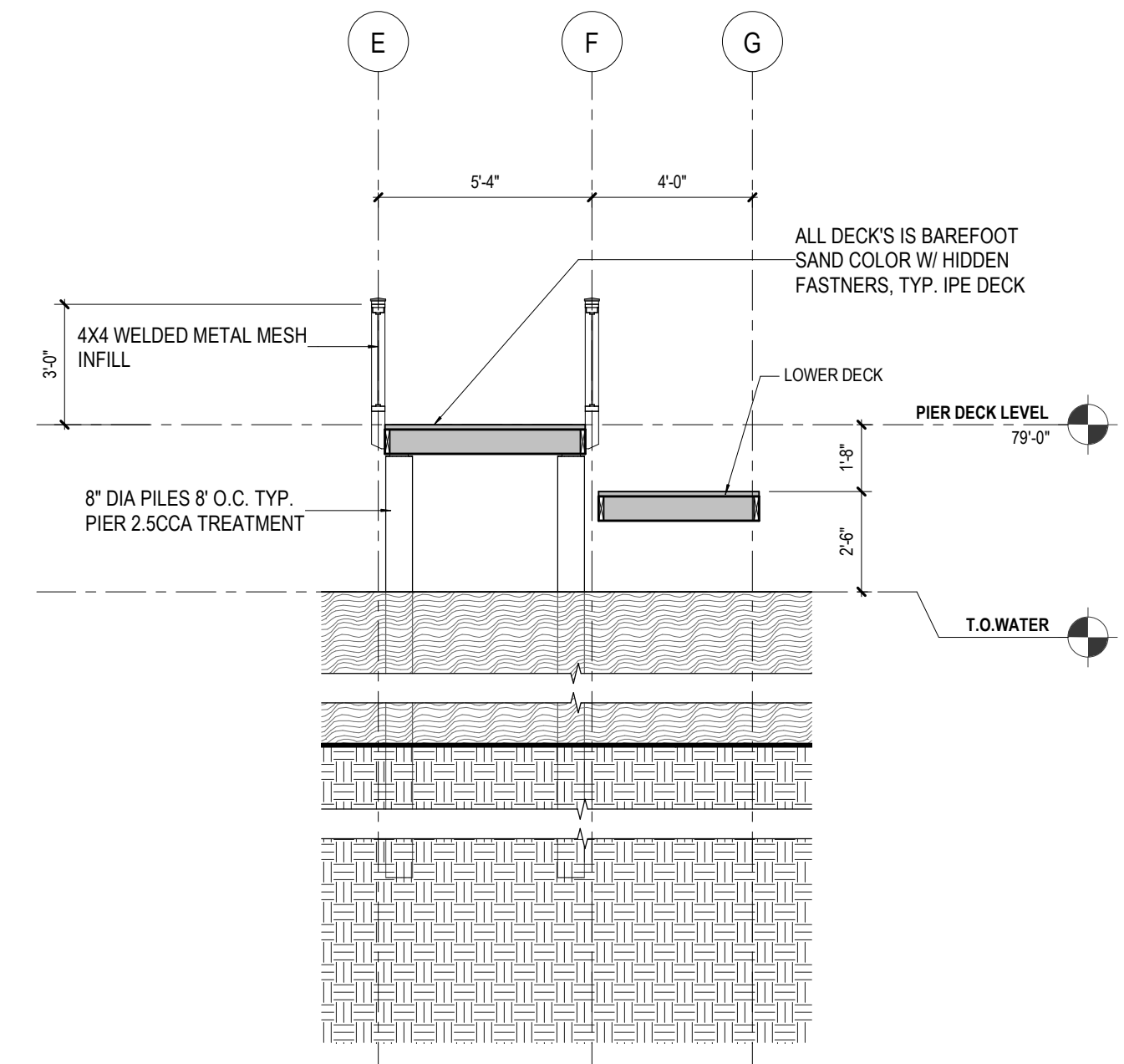
SCALE: 3/4" = 1'-0"



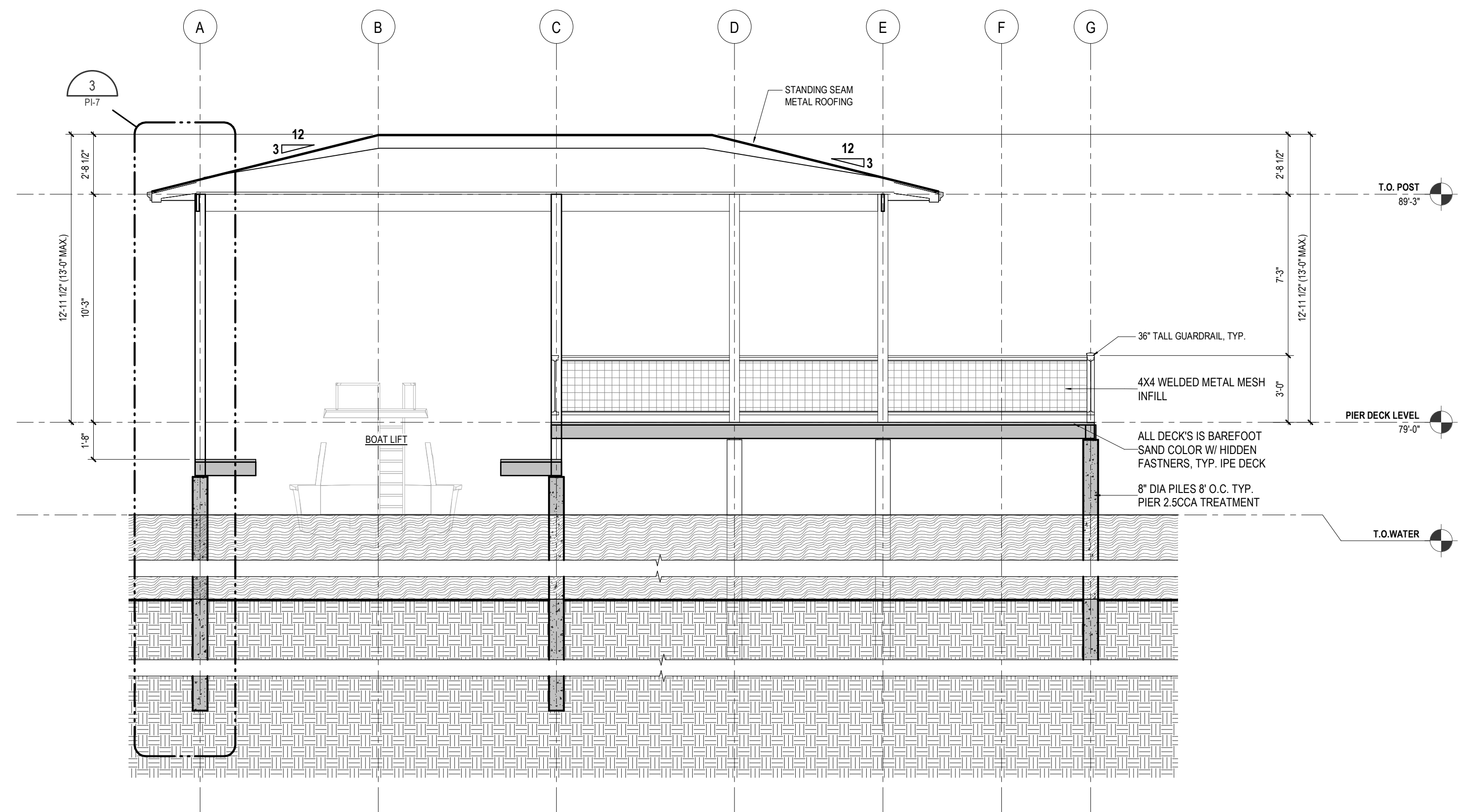
5 TYPICAL RAILING SECTION



4 GUARDRAIL ELEVATION DETAIL



2 TYPICAL DECK SECTION



1 TYPICAL SECTION

SCALE: 1/4" = 1'-0"